

| SMART DENTAL UNIT

# S30/S60

COMFORT IN EVERY MOVE

**EMPOWERING TOMORROW**

en.siger.cn

**Zhuhai Siger Medical Equipment Co., Ltd**

Add : Building 2, No.1 Chuangxin Yi Road, Tangjiawan Town, Zhuhai City, Guangdong Province, P.R. China

Tel : +86 756 3881087   Email : contactus@siger.cn   Web : en.siger.cn

 : Siger medical    : Siger\_medical





# S60

## CHOOSE A PROFESSIONAL WORK PARTNER FOR YOUR TEAM



Intelligent  
Control



Infection  
Control



Professional  
Treatment Unit



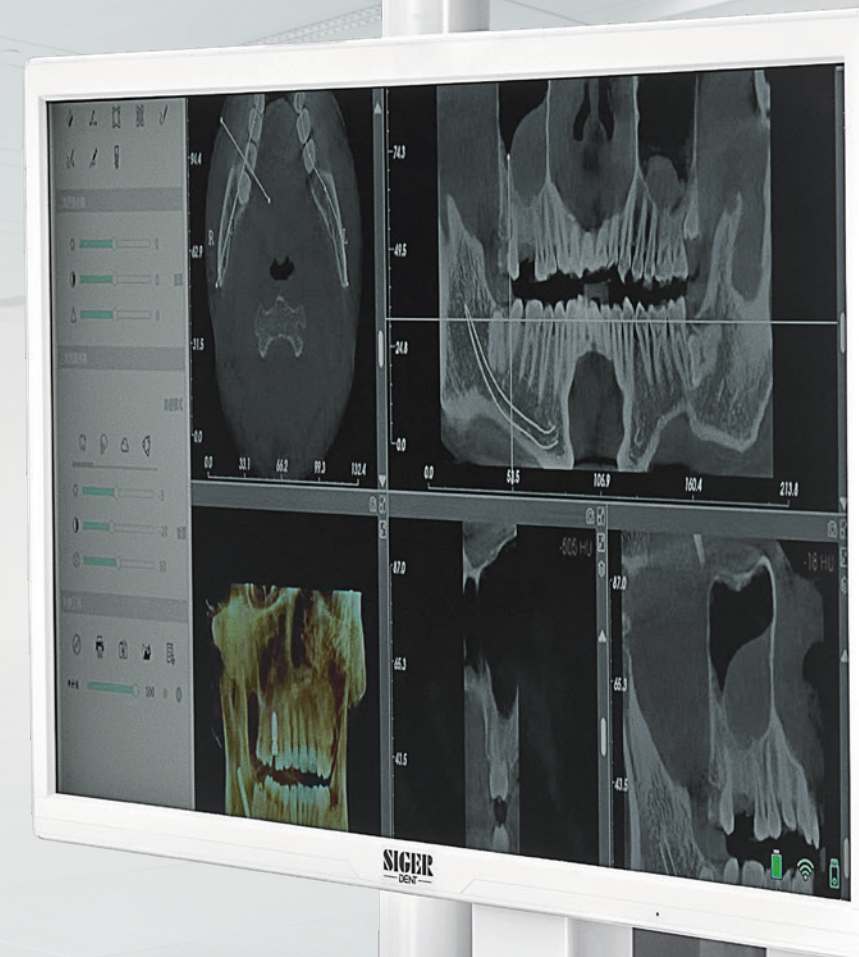
High-Quality  
Lighting



Ergonomic  
Design



Efficient  
Workflow





# S60

DENTAL UNIT FOR IMPLANT

## High-quality Light for Implant:

36 high CRI imported light sources, multiple working modes

## Standard Metal Suction Handle:

Capable of H.V.suction and S.E.suction with a delayed function

## Inner-track Design:

Start and stop smoothly, safe and comfortable

## Ergonomic Design:

Provides good support for the patient, allowing the body to remain relaxed during long-time treatments

## The Mobile cart treatment unit can be raised and lowered:

The height adjustment range is 70-90cm





### Professional Optical Solution

36 imported light sources with a high color-rendering index are intelligently arranged to provide a high degree of shadowlessness, offering superior visibility for in-depth oral surgical procedures



### Touch Control Panel

Features 5 levels of brightness and 3 levels of color temperature adjustments, catering to different lighting preferences



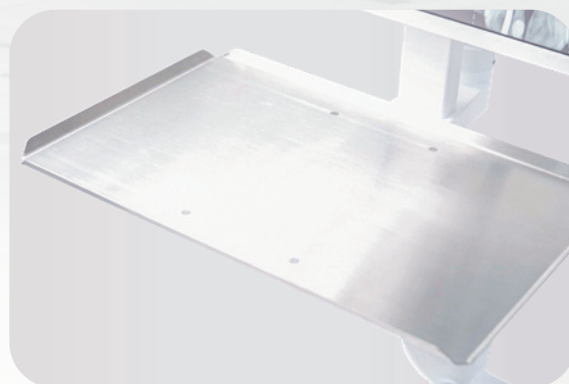
### Optional Quick-connect Solution for Tubings

Improve efficiency. Clean and hygienic



### High-Definition Intra-oral Camera

The extra-thin monitor displays high-quality images with wireless transmission for added convenience



### Medical-grade Stainless Steel Tray

Corrosion-resistant and easy to clean



### Lab-grade Caster

Move freely, for ideal treatment position



### Digital Smart Experience

Effortless control at your fingertips, delivering a seamless human-machine interaction experience

# INTELLIGENT DESIGN FOR UNMATCHED PERFORMANCE





# S30

## ALL DESIGNS ARE FOR BETTER WORK



Full-color  
Touchscreen



Detachable  
Upholstery Design



LED  
Dental Light



Smart  
Linkage Program



Top-fill  
Water Tank



Electric  
Door



### Smart Voice Assistant

Doctors can easily activate the dental chair control system with voice commands by saying **"Hello Siger"**. This allows for seamless control of chair movements, dental light, timer and more, enhancing treatment efficiency and reducing the risk of cross-contamination by minimizing manual interactions.



# S30

DENTAL UNIT

## Reflective Dental Light:

5 brightness levels, 3 color temperatures, CRI ≥ 90

## Multi-function Foot Control:

2 customizable programs. Adjustable button functions to suit doctor preferences

## Various Treatment Units:

Swing-top version  
Hanging version  
Mobile cart version

## Split-type Design:

Floor-mounted hydro-group & multi-functional column - stable, sleek, and stylish.  
Magnetic side door for easy access and maintenance

## Cast Aluminum Construction:

Precision engineering for unmatched durability.  
Sleek, modern design for a professional aesthetic

## Inner-track Design:

The next-generation inner-track dental unit has an ergonomic design for ultimate comfort



# SIGER SMART™

## DIGITAL SMART EXPERIENCE EFFORTLESS CONTROL AT YOUR FINGERTIPS

The S30/S60 features the advanced SigerSmart™ OS Intelligent Control System, allowing doctors to control instruments through the touchscreen for enhanced treatment efficiency precisely. With customisable presets, every function is just a touch away, delivering a seamless human-machine interaction experience.

### Tooth Preparation Mode

Precise control of instruments, including forward/reverse rotation, speed control, and various working modes at different adaptable contra-angle handpieces



### Customizable Multi-Function Foot Control

Two control modes to adapt to different user preferences



### Scaling Mode

Adjustable scaler power and operational settings



### Disinfection System Settings

Customizable pipeline disinfection system with selectable activation modes





# DESIGNED FOR PRACTICAL USE FOR BOTH EFFICIENCY AND SAFETY

- **3 Doctor Programs & 18 Smart Memory Slots**

Customizable settings for up to 3 doctors

- **Smart Linkage Program**

One-touch control for cup water, and flush, chair position, and oral light on/off

- **Customizable Timers**

Adjustable cup water and cuspidor flush durations

- **Real-Time Instrument Status Display**

Dynamic monitoring of instrument operation



### Dynamic Instrument Interlock

Prevents accidental injuries and enhances workflow efficiency



### Preset Memory Chair Positions & Custom Smart Linkage

With just one touch, the chair adjusts to your preferred comfortable treatment position



### LED Brushless Micromotor

Delivers precise control and enhanced performance, with the ability to support two brushless micromotors simultaneously, significantly boosting workflow efficiency



# DESIGNED FOR FLEXIBILITY AND EASE

- **Adjustable Assistant Arm**  
Dual-joint design for optimal positioning
- **Photoelectric Sensor Control for Suction**  
Upgradable to metal suction handles for both H.V.and S.E.suctions
- **11-Key Touch Assistant Control Panel**  
Adjust chair positions, control dental light on/off, cup water, cuspidor flush, and more



**Detachable Cuspidor**  
Easy to clean and disinfect for enhanced hygiene

**Electric Door**  
One-touch opening for convenient maintenance



**Top Filling Design**  
Effortlessly add distilled water and disinfectant



**Cuspidor Safety Lock**  
Automatic chair lock when the cuspidor rotates above the seat, preventing collisions



## ERGONOMIC DESIGN CRAFTING UNMATCHED COMFORT

Introducing the upgraded SmoothControl™ Smoothly-Start Inner Track Designed Dental Chair



### Inner-track Design

The seat and backrest have synchronized movement to fit the body's curvature, providing a stable and comfortable experience. The extra-wide backrest and seat cushion allow the patient's head, shoulders, arms, waist, and legs to be well-wrapped and supported, allowing the body to remain relaxed during long-term treatment



### New Pinch-Type Headrest

Easily adjust the angle to suit the patient's needs. The headrest's locking mechanism is stable and reliable, preventing accidental movements



### Dual Safety Feature

Stops immediately and slightly rises upon encountering an obstacle during descent. Locks chair movement when instruments are in use to prevent accidental injuries



### Ultra-Thin Cast Aluminum Backrest Design

Provides ample legroom for both doctors and assistants, enhancing comfort and mobility



# BIOTUBE™ AUTOMATIC PIPELINE DISINFECTION SYSTEM

One-touch, fully automated disinfection.  
Effectively minimizes the risk of iatrogenic cross-infections



## New Suction Filters

Detachable for easy cleaning



## Real-time Disinfection Progress Display

Monitor each step of the disinfection process on the screen



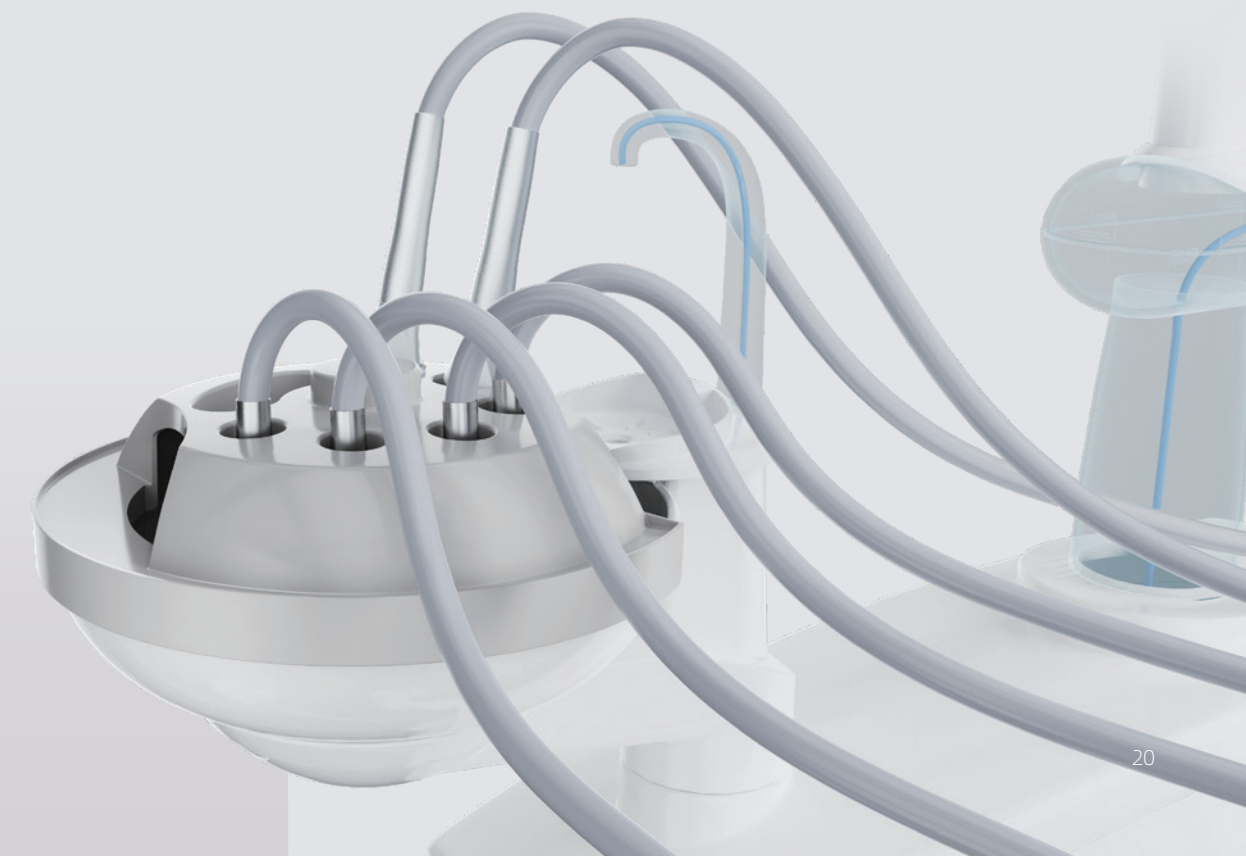
## Historical Disinfection Records

Stores up to 300+ logs for tracing



## Detachable Light Handle

Compatible with 135° high-temperature, high-pressure sterilization. It can be disinfected with alcohol or disinfectant wipes





# COLORFUL EXPRESSIONS

## UNIQUE STYLE

Let your unique aesthetic shine through with customisable color options



### Italian upholstery color



### Optional sewn upholstery (silicone-coated leather)

